



# Technical Specifications

(rev. 08-12-25)

**The American Theatre**  
125 East Mellen Street  
Hampton, Virginia 23663  
Main Phone: **(757) 722-2787**

**Administration Contacts**

<b>Artistic Director:</b>	<b>Jody Madaras</b> (757)728-3200 Jody.Madaras@hampton.gov
<b>Production Manager:</b>	<b>David Vandervliet</b> (757) 728-3202 David.Vandervliet@hampton.gov
<b>Arts Administrative Mgr</b>	<b>Kelsey Rozier</b> (757) 728-3201 Kelsey.Rozier@hampton.gov
<b>Education Manager</b>	<b>Ronald Boucher</b> (757) 728-3098 Ronald.Boucher@hampton.gov
<b>Box Office Manager:</b>	<b>Valerie Hill</b> (757) 896-1245 Valerie.Hill@hampton.gov

## The American Theatre in Hampton, Virginia Rental and Technical Information

The American Theatre is a historic, fully ADA-compliant facility that features:

- A 382-seat proscenium-style main hall, with 1 balcony
- 3 large lobbies with 2 Concession Stands
- A Lecture Hall with screen/projection, a CCTV feed from the main hall and a sound system
- A Dance Studio with sprung wooden floor, black Marley available, dance barres, full-wall mirrors and a dedicated sound system
- Audio feed from the main hall throughout the entire front of house
- Williams Sound Assisted Listening Device System available at the Box Office
- 2 ample load-in spaces from our driveways at ground/ stage level, 1 stage right and 1 stage left
- 1 large Green Room
- 1 small Green Room with kitchen
- 2 Star Dressing Rooms with individual bathrooms, 1 with a shower
- 2 large Chorus Dressing Rooms with individual bathrooms and showers
- There are 2 video monitors (SR, and in the Green Room) with a CCTV feed from the stage and audio monitors/stage manager feed throughout the entire back stage area
- There is wireless internet available in the backstage areas
- Crossover is upstage of the cyc or through the large Green Room
- The stage is a sprung wooden floor suitable for dancing, with black Marley available

## **LIGHTING**

All instruments fitted with Stage 3-Pin Connectors.

### **Ellipsoidal Instruments (575W lamps)**

16 - 19° ETC Source 4 Full Size  
1 - 26° ETC Source 4 Full Size  
15 - 26° ETC Source 4 Junior  
36- 36° ETC Source 4 Junior  
12- 50° ETC Source 4 Junior

Notes: Source 4 Juniors take "M" size gobos (2-1/2"), the barrels do not turn nor can they be swapped. Source 4 Full Size instruments take "A" size gobos (3- 3/16").

### **Wash Instruments**

35- Source 4 PAR EA (575W lamps) Very Narrow, Narrow, Medium and Wide Lenses for all PARs.

### **Cyclorama Instruments (750W lamps)**

9- Altman 3 Cell Cyc with feed through. Gel size is 13" high x 8-3/4" wide.  
6- 3 Cell Cyc Runts. Gel size is 7-1/2" high x 8-3/4" wide.

### **Followspot Accessories** (using 2- 19° Source 4 Full Size on swivel stands on the Catwalk)

2- Drop-in 6 color Boomerang City Theatrical #1410. One slot is used for blackout.

### **Booms/ Mounts**

6- 2' x 2' flat boom bases  
6- 1-1/2" x 10' boom pipes  
12- Floor Mounts

### **Lighting Accessories**

28- Barn Doors for PARs  
10- Donuts (fit all Ellipsoidals)  
12- Half Hats (fit all Ellipsoidals)  
2- Iris (fit Full Size Ellipsoidals only) Currently used in followspots.  
Large assortment of gel from Rosco, Lee, GAM.  
Large assortment of templates (gobos) in "A" and "M" sizes.  
7- Size "A" (3-3/16") Template Holders  
18- Size "M" (2-1/2") Junior Template Holders  
4- Size "M" (2-1/2") Junior Glass Template Holder  
Assortment of DMX, RG58, VGA and other cables and adapters  
6- Edison Male to Stage Pin Female adapters  
6- Stage Pin Male to Edison Female adapters  
8- Two-fers 6- Three-fers

## Lighting Control

ETC Ion Xe Lighting Console  
24 Submaster Sliders with 10 pages of memory  
2 DMX universes to control up to 1024 Dimmers/ Attributes  
Remote Focus Unit onstage  
ETC Sensor+ Dimmer Racks with 162 D20 2.4k dimmers E  
TC Unison Architectural Control

## Circuit plot

House is dimmer per circuit

Circuit(s)	Location
1-20	FOH Catwalk
21, 23, 25, 27, 29, 31	HL Box Boom
22, 24, 26, 28, 30, 36	HR Box Boom
32, 33, 34	Balcony Rail
38, 40, 42	UC Stage Wall
39, 41	MSL Stage Wall
43, 45, 47	USR Stage Wall
44, 46, 48	USL Stage Wall
49 – 64	First Electric
65 – 80	Second Electric
81 – 96	Third Electric
97 – 102	SOCO, DSL
103 - 108	SOCO, MSL
109 – 114	SOCO, DSR
115 – 120	SOCO, MSR
121 – 126	SOCO, USL
127 – 132	SOCO, USR
133 – 138	SOCO, FOH Catwalk
139 – 144	Balcony Rail
193	House Lights, Front Orchestra
195	House Lights, Middle Balcony
199	House Lights, Middle Orchestra
201	House Lights, Rear Balcony
205	House Lights, Rear Orchestra
207	House Lights, Under Balcony
211	House Lights, Front Balcony
213	House Lights, Wall Sconces and Aisles

Repertory Plot is available upon request.

## **Sound**

The system is Mono due to the size of the hall. It can be configured for Stereo with advance notice. For basic events we provide 2 stage monitor mixes with individual EQ from FOH. More can be available from FOH and/or Monitor World with advance notice.

FOH mixing position is located in the last row of the house, approximately 65' from the stage, under the balcony.

3-phase power distro tie-in is available on both stage right and left; 60 amps SR and 200 amps SL

### **FOH Mixing Position**

Midas M32 Digital 40 Channels. 32 Midas Preamps, 25 Mix buses, 25 Midas Pro Motorized Faders. 50 built in effects, 7" TFT Display and 32 channel, 48kHz USB 2.0 audio interface. House snake uses channels 1-24. Channels 25-32 are available for additional inputs.

#### **1 - Midas DL32**

32in/16 out stage box with 32 Midas microphone preamplifiers, Ulatranet Ethernet compatibility and ADAT digital connectivity

#### **1- Lexicon MPX550 Dual Channel Processor**

#### **1- Ashly GQX-3102 Stereo 31 Band EQ for Mains**

#### **2- Ashly GQX-3102 Stereo 31 Band EQ for 2 basic stage monitor mixes**

#### **1- PreSonus ACP-88 8-Channel Compressor/ Gates**

#### **1- Production Intercom MS 200 Sub-Station (Headset system)**

#### **1- Numark MP103 USB MP3 and CD player with USB**

#### **1- Denon C615 CD Player**

#### **1- Panasonic DVD/Bluray Player – DP-UB820-K**

### **Monitor World (Stage Right)**

#### **1- Mackie 24x8 Console**

#### **1- Whirlwind IMP 1x2 Splitter**

#### **1- Rapco 100', 16 channel Subsnake**

Assorted adapters, turn-arounds and cables in XLR, 1/4" and 1/8" Phono, RCA and Speakon

Assorted quad boxes/ power strips

### **Rack in Control Booth**

#### **1- Biamp Nexia SP System Processor – (NO Adjustments permitted)**

#### **1- Rane MLM82 Mic/Line mixer**

#### **1- C audio 4x300 300W @ 4 Ohm 4-Channel Amp powering the Balcony and Under balcony Speakers**

#### **1- C audio 2x1100 1100w @ 4 Ohm powering the basic stage monitor mixes**

#### **1- TOA A-906MK2 60W RMS Mixer/Amp controls the Lobby feed**

#### **1- Ashly MX206 Stereo Mixer powering the Assisted Listening Device System**

#### **1- Williams Sound Assisted Listening Device Transmitter**

#### **1- Production Intercom MS 200 Master Station (Headset system)**

## **Speakers**

- 5- **D.A.S. Variant 112A Powered Line Array** (Mains, flown center of house at the proscenium)
- 2- **JBL Marquis Series low frequency Speaker 2x15" 700W** (Subwoofers on main floor in front of Apron)
- 2- **JBL EON 10G2 powered speaker** (Front fills placed on top of Subwoofers)
- 2- **JBL Marquis Series speaker**
- 2-**way full range 100x70° 150W** (Under balcony)
- 2- **JBL SP219-9 2-way full range 90° Speaker Cabinets** (Balcony)
- 4- **JBL MR Series 2-way Stage Monitors**

## **Other Equipment Available**

- 1- Phillips AZ1305 Portable CD stereo (boombox)
- 1- Toshiba SD-6100 DVD Player
- 1- Philips DVP 3960/37 DVD Player
- 1- Dell Latitude E 5530 Laptop
- 1- Epson EB-PQ2216b Projector (permanent positioned on balcony rail)
- 1- Eiki EIP-HDT30 Projector

## **Mics/ DI**

- 2- Shure SM 27 Multi-Purpose Microphones
- 1- Shure Beta 52A Kick Drum Microphone
- 4- Shure Beta 58A Vocal Microphones
- 4- Shure SM 58 Vocal Microphones
- 4- Shure SM 57 Instrument Microphones
- 1- Shure UC1-UA Wireless RF Lavalier Microphone
- 2- AKG P170 Condenser Microphones
- 1- Whirlwind HotBox Active Reference DI
- 3- Whirlwind IMP 2 Passive DI

## **Mic/ Other Stands**

- 4- Table
- 2- Small
- 3- Tall round base
- 15- Tall tripod base
- 10- Long boom arms
- 5- Short boom arms
- 5- Guitar stands

## **Intercom System**

- 6- Production Intercom BP-1 belt pack and SMH210 headset (feeds in the Booth, FOH mixing position, Followspots, Fly Rail, DSR, DSL and the tech table)
- 1- TELEX RadioCom BTR-700 Single-Channel UHF Synthesized Wireless Intercom System
- 4- TELEX TE-700 UHF Single-Channel Wireless Transceiver with A4M Headset Connector (2- single muff headsets and 2- double muff headsets)

**Dance Studio Sound System**

- 1- Soundcraft Spirit M12 Console
- 2- Crown CTS-600 amps
- 1- Rane AC-22S active crossover
- 2- Rh 2-way full-range speakers
- 1- Marantz PMD 350 cassette/ CD Comb

**Backline Gear Piano:**

- 1- 9' Steinway Concert D Grand Piano
- 1 - Yamaha upright piano

**Bass Gear:**

- 1- Gallien-Krueger 410 BLX-II Speaker
- 1- Gallien-Krueger 250 BL Head
- NO Instrument cable available, please provide your own

**Guitar Gear:**

- 1- Roland Jazz Chorus JC-120 Amp
- NO Instrument cable available, please provide your own

**Ludwig Drum Kit:**

- 22" Kick (Aquarian Regulator Front, Ludwig Weathermaster Head)
- 18" Kick (Aquarian Response 2 Front, Ludwig Weathermaster Head)
- 12" Tom (REMO Weatherking Coated Ambassador Head, REMO Weatherking Ambassador Bottom)
- 13" Tom (REMO Weatherking Coated Ambassador Head, REMO Weatherking Ambassador Bottom)
- 14" Floor Tom (REMO Weatherking Coated Ambassador Head, Ludwig Weathermaster Heavy Bottom)
- 16" Floor Tom (REMO Weatherking Coated Ambassador Head, REMO Weatherking Ambassador Bottom)
- 14" Snare (REMO Weatherking Coated Ambassador Head, Ludwig Weathermaster Bottom)

**Other Heads Available:**

- 14" Ludwig Weathermaster Medium Coated Ambassador
- 14" REMO Weatherking Ambassador Snare
- 14" Ludwig Weathermaster Heavy
- 22" Ludwig Weathermaster
- 18" Ludwig Weathermaster

**Orchestra/ Marching Band Bass Drum:**

- 2- Ludwig 28" Bass Drums
- 28" Bass Drum REMO Weatherking Pinstripe Bass Head

**Cymbals – Sabian B8**

- 14" Hi-Hat set
- 16" Thin Crash
- 20" Ride



**Hardware:**

- 2- Boomed Cymbal Stands
- 1- Non-Boomed Cymbal Stand
- 1- Hi-Hat Stand
- 1- Cymbal Stand arm
- 6- Floor Tom Legs (3 Per Floor Tom)
- 1- Snare Stand
- 1- Single Action Kick Pedal
- 1- Kick Drum Head with Tom Rack
- 1- Toy Clamp
- 1- Throne

**STAGE EQUIPMENT**

- 6- 4' x 8' Wenger platforms with 8" or 16" leg height, skirted or not
- 1- 3' x 3' x 5" high Conductor's platform?
  
- 1- Wooden full-height podium with extending side shelf either side
- Assorted 6' x 9' or 8' x 10' rugs
- Full-stage black Marley
- 80- Padded folding chairs- dark red fabric
- 18- Padded non-folding chairs- dark red fabric
- 44- Black Wenger music stands
- 15- Music stand lights
- Assorted clip lights and Little Lites are available where required
- 2- 4' adjustable height tables
- 6- 6' tables 2- 8' tables
- 1- tech table is available to place in the center of the house for rehearsals

**Soft Goods Inventory**

- Red Velour Valance and Main Curtain/ Fire Curtain (travels open)
- 4- 4' x 28' Black Borders, flat, no fullness
- 12- 4' x 22' Black Legs, flat, no fullness
- 2- Sets of Black Travelers, flat, no fullness
- 1- Full Stage Black, flat, no fullness with center slit
- 1- 28' wide x 20' high White Poly Cyc
- 1- 28' wide x 20' high Black Sharktooth Scrim

## Rigging and Stage

Rigging is a mixture of 4 JR Clancy Scene Control motorized battens, single-purchase counterweight arbors and dead hung pipes.

NO ADDITIONAL RIGGING POINTS AVAILABLE

LINE SET	ITEM TYPE	FROM P. L.	PIPE TRIM
1 Valance	Dead Hung	0'- 3"	22'- 6"
2 Main	Drape Dead Hung	0'- 9"	22'- 6"
3	1st Electric Motorized	3'- 11"	24'- 6"
4	Spare Dead Hung	5'- 5"	22'- 6"
5	Black Border Motorized	6'- 5"	22'- 6"
6	Spare Dead Hung	7'- 5"	22'- 6"
7	Black Traveler/ Legs Dead Hung	8'- 5"	22'- 6"
8	2nd Electric Motorized	9'- 5"	24'- 6"
9	Black Border Dead Hung	10'- 5"	22'- 6"
10	MOVIE SCREEN Motorized	11'- 5"	36'- 0"
11	Spare Dead Hung	12'- 5"	22'- 6"
12	Spare Dead Hung	13'- 5"	22'- 6"
13	Black Traveler/ Legs Dead Hung	15'- 0"	22'- 6"
14	Black Border Counterweight	16'- 0"	22'- 6"
15	3rd Electric Counterweight	17'- 5"	24'- 6"
16	Full Stage Black Counterweight	19'- 5"	22'- 6"
17	Legs Counterweight	20'- 0"	20'- 6"
18	Cyc Electric Counterweight	21'- 5"	24'- 6"
19	Spare Dead Hung	22'- 0"	22'- 6"
20	White Cyc Counterweight	22'- 5"	20'- 6"

The grid is 36'- 6" above the deck

Batten travel is from 4'- 6" above the deck to 36'- 0" above the deck.

A scenic drop 18'- 0" high can be flown out of sight lines with border pipes trimmed at 21'- 6"

## **Stage Configuration and Dimensions**

Proscenium is 28'- 11" wide x 20'- 0" high

Bottom of valance is 17'- 8" from the deck

Main Curtain opening is 22'- 7" wide

Stage house and floor is 32'-0" wide x 29'- 0" deep

Useable stage space is 28'- 6" wide due to pilasters on the side walls and only 22'- 0" wide with soft goods in place

The apron extends 2'- 0" downstage of the plaster line at the center line and 1'- 2" at the proscenium wall

There are removable steps from the stage to the house on SR and SL. (The sub speakers are under the stairs)

The rear stage wall is 27'- 0" from the plaster line

The cyc hangs on the last lineset upstage at 22'- 5" from the plaster line

Stage loading door SR is auto-drop fire rated roll-up door at 6'- 0" wide x 12'- 0" high

Stage loading door SL is hinged fire rated door at 5'- 4" wide x 12'- 0" high

The JR Clancy Scene Control Panel for the motorized battens is in the stage right wing

The fly rail is located up stage right. There is no loading rail

All travelers are operated from stage right

## **WARDROBE**

A small laundry room with 1 washer and 1 dryer

1 Fabric/ costume steamer

2 Hand steamer

1- Iron

3- Ironing boards

1- Singer sewing machine

3- Electric space heaters

Assorted bath towels and hand towels in white and black

## **KITCHEN**

A fully equipped catering kitchen for show/company use (Including full sized Refrigerator, Stove/Oven Range, Microwave.)

Drip coffee maker and K cup pod coffee maker

Kitchen stocked with assorted cooking and dining items- pots, pans, plates, glasses and utensils

Assortment of paper plates, bowls, napkins, tissues, etc.

## **MISCELLANEOUS**

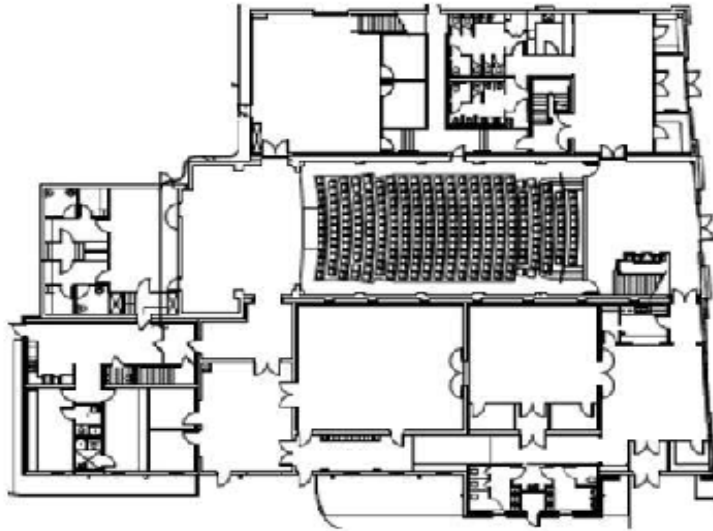
2- AED/CPR units, wall-mounted; 1 in the large Green Room and 1 in the middle lobby

2- Box fans

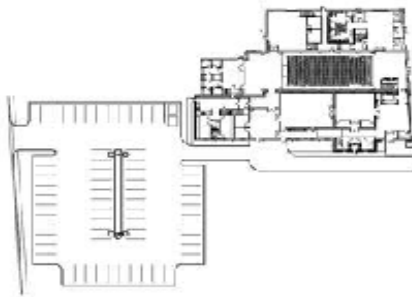
3- Electric Space heaters

# The American Theatre

**Building overview**



***Lot Overview***



[illegible]

THE AMERICAN THEATRE	
DATE: May 2002	Stage Dimensions
REV: A	2 OF 2
SCALE: 1/8" = 1' 0"	
Drawn By: Philip Watson	

[illegible]

LONGITUDINAL SECTION  
SCALE:  $\frac{1}{16}'' = 1'-0''$